
Lake Views

Greater Bobs & Crow Lakes Association Magazine



Fall/Winter 2010 Magazine

www.bobsandcrowlakes.ca

Email: gbcla@ca.inter.net



Photo by: Norm Mole

*October gave a party;
The leaves by hundreds
came-
The Chestnuts, Oaks, and
Maples,
And leaves of every name.
The Sunshine spread a
carpet,
And everything was grand,
Miss Weather led the
dancing,
Professor Wind the band.*

*The Chestnuts came in
yellow,
The Oaks in crimson
dressed;
The lovely Misses Maple
In scarlet looked their best;
All balanced to their
partners,
And gaily fluttered by;
The sight was like a
rainbow
New fallen from the sky.*

*Excerpt from
"October's Party"
by George Cooper, American
poet.*



Board of Directors 2010-2011

Taro Alps
President
mandtalps@yahoo.ca

Larry Arpaia
Communications & PR
larpaia@frontenac.net

Bonnie Carabott
Water Quality
jcarabott@sympatico.ca

Ken Connolly
Crow Lake Rep.

Bernie Gelineau
Crow Lake Representative
bgel@istar.ca

DiAnne Henderson
Commercial Camp Liaison
grbaycbn@rideau.net

Heather Irving
Marine & Cottage Safety
bobslake1@gmail.com

Edie MacNinch
Membership Secretary
emacninch@sympatico.ca

Rich Phillips
Vice-President & SF Twnshp Rep.
rcmphillips@sympatico.ca

Rick Prudil
Website Coordinator
rickprudil@hotmail.com

Gordon Thompson
Fisheries & Wildlife
gandkthompson@rogers.com

Janice Walker
Secretary
Janicewalker7@gmail.com

Martin Yates
Treasurer
myates@ca.inter.net

Editor's Notes

What a magnificent summer! I hope you have tucked away many happy memories of relaxing days with family and friends at the lakes.

This issue of *Lake Views* is full of interesting reports and articles and I hope you will find time to enjoy it all. Please note several important topics: the emergency fire pumps that are being positioned around the lakes and two important messages from Fire Chief Chesebrough that are extremely important for your safety. Please take a good look at your lanes and driveways as soon as you return after the winter and have the 911 instruction sheet for emergencies beside a household telephone.

Election fever is over and you now have your representatives in place for the next four years. A listing of the names is in the magazine.

The report from Gordon Thompson, Director of Fisheries is extensive and amazing. The amount of volunteer help to ensure creek rehabilitation for spawning is outstanding. Gordon and his team are to be congratulated!!

Please remember your Association membership renewal and get it in before Edie has to write to you. Donations to the Foundation are critical to keep the programs going for the lakes. Try to put this important support on your list for yearly charitable giving.

I wish everyone a safe and healthy winter. We already had a surprise of wet snow on a day in October. We know there is more to come!

Susan O'Brien Mactaggart



Editor: Susan O'Brien Mactaggart
Technical/Printing support: Tammy O'Neil



President's Message

Summer 2010 was one of warm weather and sunny days so I hope that everyone enjoyed their boating, swimming, skiing and tubing or just sitting outside to enjoy our beautiful lakes! The lake temperature, as I measured it, rose to a very balmy 84⁰ Fahrenheit. The warm water however forced the fish into deeper water so fishing was not as productive as in the past but it was a great summer for swimming.

By the time you receive this magazine the municipal elections in Central Frontenac, South Frontenac and Tay Valley will be over and new township councils will have been elected. The mayors and councillors are the ones who make the decisions that have the most impact on what happens and how it happens to our lakes. The Association will continue to foster working relationships with the new politicians and work on your behalf to ensure that our lakes are kept in their excellent condition and protected for the future. I hope that everyone who was eligible took the time to vote. The unofficial results from the elections of October 25 can be found later in "Lake Views".

Two issues of importance to the area are: the waste management plan (garbage & recycling pickup in Bedford District) and the inspection of septic systems. Letters on these subjects (the text in a separate article in this issue) were sent to the current councils and we will be sending the letters again to the new councils.

To further the improvement of our pickerel (walleye) fishery the rehabilitation of creeks that flow into Bobs & Crow Lakes has been undertaken to encourage the pickerel spawning. A 5 year plan for the fisheries was also completed and approved by your Board. Fisheries improvement and creek rehabilitation is only possible through the generous support of the Ministry of Natural Resources (MNR) and the many volunteers who work hard in all sorts of weather to improve our creeks.

The Association also undertook a detailed shoreline survey of our lakes, completing about half of the properties that line our shores. With additional financial grants, support of people trained to carry out a shoreline survey and our all important volunteers we will be continuing this shoreline survey in 2011 and we hope to complete all of the properties around our lakes by the end of next season.

We are redesigning our website to give it a fresher look and make it easier for you to navigate and view items that you are interested in. The plan is to have the new website ready for the end of November so be sure to check it out and let us know your thoughts.

I am also pleased to announce that we have three new directors. This will ease the workload of our current Board with an aim to improve our communications to you and provide added benefits for members.

To our American members we hope you have a good Thanksgiving in November and to our Canadian members we hope you **had** a good Thanksgiving on October 11.

I am always happy to hear from you, our friends and members, with your comments, thoughts and ideas covering anything we are working on, should work on, improve or items we haven't even thought of. Please feel free to contact me at any time. mandtalps@yahoo.ca

I wish all our members have a great holiday season and that you have a safe, happy and prosperous winter!

Taro Alps
President



Frontenac County Municipal Election Unofficial Results

South Frontenac

Mayor: Gary Davison

Bedford District Councillors: Del Stowe
Mark Tinlin

Central Frontenac

Mayor: Janet Gutowski

Ward 3 (Oso) Councillors: Wayne Millar
Frances Smith

Tay Valley

Reeve: Keith Kerr
Deputy Reeve: Susan Freeman

Sherbrooke Councillors: Mark Burnham
RoxAnne Darling



Photo by: Norm Mole

Membership Notes - Fall 2010

By Edie MacNinch

Welcome to all our new members and thank you to all who have renewed their memberships for the year ending June 2011. We have a significant number of new members this year and many lapsed members responded to the "reminder".

A membership year runs from June 30th to the following June 30th. Most people try to pay their dues by the Annual Meeting in July. Please talk to your cottage neighbours and encourage them to join the Association. The more members we have, the more effective we can be!

You now have the option of joining/renewing via the Association website. It is easy to use (I tried it!) but you need to mail me a cheque. I have had several forms come through with no follow-up cheque. You can also renew for more than one year.

If you wish, you can make a donation to the Association or the Foundation (or both). Please note that Association donations can be added to your membership dues. Foundation donations require a separate cheque (for which there is a tax receipt) and are made out to the Bobs & Crow Lakes Foundation.

You will note that your membership expiry information is in the lower right corner of your magazine mailing label. Most will say 30-June-11. Please check that it is accurate. If you receive your magazine by e-mail and don't know the expiry date, send me an e-mail. Note the membership form in the magazine. Put it in a prominent place so you remember to renew - please - I sent out over 100 reminders at the end of September!

If you need to get in touch or are unsure of the status of your membership, my e-mail address is: emacninch@sympatico.ca.



IMPORTANT INFORMATION REQUIRED WHEN CALLING 911 FOR EMERGENCIES

- When calling 911 using a cell phone, the caller must indicate **Kingston Fire Dispatch** for fire emergencies or **Kingston Ambulance** for medical emergencies.
- Caller must identify or confirm correct civic address of the emergency and or closest major intersection.
- For medical emergencies caller must be prepared to provide any or all information regarding the patient's condition and any action being taken.
- Caller must indicate whether or not there is access to the patient.
- For island properties caller must indicate the access point for marine units.
- Caller must advise if there are boats available to transport emergency personnel to the island.
- If island name or civic address is not available, caller must identify to the best of their ability the closest mainland access to the island.
- For fire emergencies on islands, caller must provide the nature of the fire ie: wild land or structure fire, the number of buildings in the affected area, if the structures are occupied and above information regarding access points for marine units and available boats.

NOTE: Any information the caller can relay is important for the responding personnel and equipment.

Residents are reminded that laneway/ driveway clearances are to be 15 feet wide and 15 feet high with a base to support a minimum 35,000 pound vehicle in order for emergency personnel and apparatus to efficiently respond to emergencies.

SOUTH FRONTENAC FIRE & RESCUE
4432 George St
Sydenham Ontario
K0H-2T0

Fire Department Report

By Rick Chesebrough - Fire Chief,
Township of South Frontenac



Over the past few weeks we have had an opportunity to meet with members of your Association to discuss emergency responses to water access properties as well as looking at the unique characteristics of Bobs Lake first hand with a boat tour and looking at the fire department's GPS unit. During the discussion, the issue of boat launches was raised, which included the number of launches and the various locations and whether or not they are public or private sites. As the fire department has map books that list various sites, it was agreed that your Association would review the map book and make recommendations for alternate launch sites. As your Association moves forward on this initiative, residents are asked to provide they're input if they have launch sites that are suitable and advise if the sites are seasonal or year round accessible.

The second issue that was discussed was what information is required when calling 911 for a medical or fire related emergency? We have provided an information sheet to your Association for distribution, with the key information being if your laneway meets the minimum standard for emergency vehicle access. This is a crucial component to ensure efficient responses from emergency services. Property owners are reminded the minimum standard is 15 feet wide by 15 feet high and a base to support a minimum weight of 35,000 pounds.

Your Association plays a critical role in the Township. I commend you on your concerns for public safety and for taking a leadership role in strengthening the relationship with the fire department. We are committed to providing the highest level of service to all our residents and welcome further meetings to review any or all recommendations.

At any time you have questions or concerns, please feel free to contact us.

Editor's note: Please contact President Taro Alps if you have a suitable lake access launch site.



Emergency Water Pumps

By Martin Yates

Our Emergency Water Pumps project has now successfully completed its first year, and it's time to bring you up-to-date on what's been happening, and to look forward to next year.

We received eight responses to my article in the spring edition of "Lakeviews," which invited enquiries about Emergency Water Pumps.

From the research we did earlier in the Spring, we put together a list of recommended equipment, with Wajax or Honda chosen as alternative water pump suppliers. We invited quotes, and selected a supplier – A.J. Stone of Toronto - who was able to supply us the equipment at an advantageous price and was also able to work with us and give advice on what we needed.

In June The Bobs and Crow Lakes Foundation set their 2010 budget for the project, and established their policy for the grants.

Also in June some twenty five invited people spent an interesting morning at Taro's house when Steve Bell, the Sales Engineer, demonstrated the equipment in use. Everyone was impressed with the lightness of the pump, its ease of starting, and its capacity for pumping water up the hill.

We asked the presidents of the major "Lane Associations" to publicize the program at their annual meetings, and, although this has not yet resulted in any purchases, the idea has now been brought forward for members to consider for the future.

In the end, five groups applied for the funding, all of them groups of 10 or more neighbours. The Foundation accepted all the applications, the equipment has been ordered and it will have been fully delivered by press-time.

The 2010 pricing for the recommended equipment configurations was \$2,690 using a Wajax Mini-striker Pump, or \$2,020 using a Honda 1 1/2" pump. (These prices will probably change next year.)

The grant policy for the Foundation for 2010 was for a minimum grant of \$500 for one landowner, with an additional \$100 for each additional

member of the group up to a maximum of \$1,400. For a group of ten neighbours, the Foundation's grant provided half or more of the cost of the system. We expect similar grants to be available in 2011.

We see the provision of Emergency Water Pumps around the Lakes as an important way for residents to protect their property in the event of a fire emergency while Emergency Services arrives, and the Foundation grants will encourage this provision.

We're hoping that more of you will come forward to apply for a grant for a pump for you and your neighbours. For next year's program, we hope to receive all the applications by the middle of July, so we will have the equipment in place before the end of the Summer.

I have available a document that gives full details of the project and will be most happy to forward you a copy by mail or, preferably, email. My phone number is (613) 273-7505, and my email address is myates@kingston.net.



The recommended Wajax 1.5 inch Ministriker Pump



The recommended Honda 1.5 inch High Pressure Pump.



Lake Planning

By Susan O'Brien Mactaggart

You will remember the years of intensive work that resulted in A Stewardship Plan for Bobs & Crow Lakes (2007). Our consultant was Randy French of French Planning Services. Randy has recently been awarded a major recognition for "Excellence in Planning" by the Ontario Professional Planners Institute for the development of the *Lake Planning Handbook for Community Groups*.

You can learn more about the handbook at www.lakeplan.com.

The GBCLA continues to implement the recommendations from that plan and we should be very proud that we were one of the early Ontario lake community groups to undertake a lake plan, the second in eastern Ontario after Charleston Lake and that Randy was our guide through those years. Congratulations Randy! Bobs & Crow Lakes will always appreciate your counsel, enthusiasm and support.



Have plans for your waterfront property? We can help.

reference plans ♦ easements and rights of way
building location surveys ♦ survey monument locates
site plans ♦ building and road construction layout

Drummond Concession 5A, R.R.7 Perth, Ontario K7H 3C9
Tel: 613.267.6524 Fax: 613.267.7992

www.mcintoshperry.com

Shoreline Survey

By Taro Alps

This year we embarked on a shoreline survey of Bobs and Crow Lakes. A similar survey was done in 1991 but as you can imagine there have been some changes over the last 19 years! The parts of the lake we surveyed this year included; Green Bay, Norris Bay, Big Bobs (West Basin), Central Narrows and Long Bay.

With financial assistance and aid from Science Horizons (Environment Canada), RVCA (Rideau Valley Conservation Authority), CSW (Centre for Sustainable Watersheds), the Bobs and Crow Lakes Foundation, and numerous volunteers we completed 725 properties. The remaining properties we plan to complete in 2011. Bobs and Crow Lakes have approximately 1,430 properties along our shores!

The shoreline survey consists of slowly going along the shore by boat and a checklist is completed for every lakefront property and a photograph is taken. Some of the items looked for are; type of dock or docks, number of access points to the lake, if the shore is hardened meaning if there is a cement break wall or rocks placed along the shore, whether grass is maintained down to the lake or if the shore is natural vegetation, type of lake bottom at the shore, what type if any vegetation is in the lake, if any erosion is occurring etc.

All information gathered is **personal information for you, the property owner**. A 2 to 3 page review will be written for each property and put into a binder along with approximately fifty (50) pages that have resource information, best practices and things you, as a lakefront property owner can do to maintain and improve the health of our lakes.

Over the winter the reports will be written for each of the 725 properties surveyed this year and the binders will be prepared. Once we have the binders ready and volunteers in place we will be distributing the information to each property owner beginning in the spring of 2011.

If you have any questions about the survey please don't hesitate to contact us.





Septic Inspection

By Taro Alps

This is one topic that no one wants to *get into* but as we all know poorly installed, old or leaking septic tanks have the greatest impact on the health of our lakes.

A letter was written to the three townships; Central Frontenac, South Frontenac and Tay Valley stating that we are in support of mandatory open-top inspections/re-inspections. It is felt voluntary inspections do not work. The Province has or is planning to change the building code for all of Ontario making mandatory inspections the law. We will be monitoring this progress and will keep all of our members and interested parties updated.

A special thanks to Rich Phillips and Larry Arpaia for preparing the letter.

**To: Township of South Frontenac
Township of Central Frontenac
Tay Valley Township**

Re: Mandatory Septic Re-Inspection

At the GBCLA Board meeting of September 11, 2010, the Board voted unanimously to request that each of the Townships in which our lakes lie: South Frontenac, Central Frontenac, and Tay Valley institute a mandatory open tank septic re-inspection program. We appreciate the fact that now all three Townships have instituted re-inspection programs, and that all three have the potential of including open tank inspections. However, the success rate of the voluntary programs suggests that for the Councils to be effective in making a measurable difference, the programs must apply to all cottage and home owners and must be extended to include an open tank inspection.

To illustrate the need for mandatory inspections, it might help to examine data from the current summer's results in South Frontenac. Letters were sent to all Island cottage owners on Bobs Lake (100+-). Of that number, only two responses were received and inspections completed. We submit that the results suggest a voluntary program will not be successful and that a mandatory open tank program needs to be started on Bobs and Crow Lakes.

The changes to the Ontario Building Code will protect Ontario's lake waters by improving the performance of existing on-site septic systems. The implementation date is anticipated to be Jan. 1, 2011 with a five year time frame to complete a required assessment report.

The province of Ontario has an estimated 1.2 million privately-owned septic systems with over 1500 septic systems on the waters on Bobs & Crow Lakes and many thousands of septic systems on the waters of your lake rich township.

In a study entitled Water-Access Septage Haulage Business Case sponsored by the Frontenac Stewardship Council and the Frontenac Community Futures Development Corporation, dated March 2010, Gordon Rodgers, BSc, MES, of GKR Consulting, suggests among other recommendations, that "in an ideal World" "All landowners are required to regularly inspect and pump their systems." For island properties "Cost of pumping is subsidized, if necessary, through a tax rebate or reduction."

We emphasize that the Councils have the unanimous support of the GBCLA for the initiation of mandatory inspections and we also offer any help we can provide (i.e. water transportation for inspectors) in conducting this work on our Lakes.



Bedford Waste Management

By Taro Alps

This year South Frontenac implemented a new waste management plan for Bedford District that took effect on September 20th. There have been many issues raised with this system by many different people within the district. We wrote a letter to the local township representatives raising four specific concerns that deal with private lanes. The letter is below and as you will note we asked for a reply which was received by Councillor Del Stowe and Mayor Gary Davison.

The plan going forward is to send the letter again to what we expect will be new council members after elections. For further information or details do not hesitate to contact us or visit the South Frontenac website at <http://www.township.southfrontenac.on.ca/>

**To: Mayor Gary Davison
Councillor David Hahn
Councillor Del Stowe
Public Works Manager Mark Segsworth**

Re: Bedford District Waste Management

While we know that there are many concerns regarding the South Frontenac plan for garbage and recycling pick-up in Bedford the GBCLA is raising four concerns pertaining to private lanes.

Taxation: All residents; seasonal and year round have been taxed a \$100.00 fee to cover "landfill" closing costs and yet we are also being told that we are to pay for garbage bins, or build our own at our cost. Residents on Township roads were also taxed the \$100 fee but they do not have to pay extra for a bin. Private lane residents are thus being penalized.

Maintenance: It is our understanding that garbage bags without tags will not be picked up and cleanup of all extra garbage and debris left around the bins will be the responsibility of the lane residents. This policy means you are *downloading* the maintenance of garbage and recycling to the lane residents.

Pollution: Private lanes have a mix of seasonal and year round residents. Seasonal residents may come for a week or just a weekend and leave on a Sunday. It is therefore obvious that their garbage and recycling will sit for several days, assuming pick-up is on Tuesday. This means that the refuse will become odorous, will attract animals and cause issues with garbage and recycling being spread around and throughout the bin site. This is a grave concern for pollution.

Insurance: All lanes are different and a suitable site to place bin(s) cannot always be found. This will cause issues with traffic safety and sightlines. It is felt by private lane residents that this issue and any accidents arising from poor sightlines could affect their insurance; both auto and home. Who will assume liability for injuries incurred on Township property?

An onsite visit is a must for each and every private lane to determine the optimal location of the garbage bin(s). Stakeholders and/or lane associations should be directly consulted.

A reply is requested by October 8, 2010.





Reply from Mayor Gary Davison**GREATER BOBS AND CROW LAKES ASSOCIATION**

RE: Bedford District Waste Management

Taxation: All residents; seasonal and year round have been taxed a \$100.00 fee to cover "landfill" closing costs and yet we are also being told that we are to pay for garbage bins, or build our own at our costs. Residents on Township roads were also taxed the \$100.00 fee but they do not have to pay extra for a bin. Private lane residents are this being penalized.

The \$100.00 covers landfill closure and maintenance and pickup. This is the Township policy throughout all of South Frontenac.

Maintenance: it is our understanding that garbage bags without tags will not be picked up and cleanup of all extra garbage and debris left around the bins will be the responsibility of the lane residents. This policy means you are downloading the maintenance of garbage and recycling to the lane residents. *Our contractors have been instructed to keep the bins clean.*

Pollution: Private lanes have a mix of seasonal and year round residents. Seasonal residents may come for a week or just a weekend and leave on a Sunday. It is therefore obvious that their garbage and recycling will sit for several days, assuming pick-ups is on Tuesday. This means that the refuse will become odorous, will attract animals and cause issues with garbage and recycling being spread around and throughout the bin site. This is a grave concern for pollution.

Only if garbage is outside the bin, it will attract animals, same as it would around your cottage/home. This has not been an issue in other areas.

Insurance: all lanes are different and suitable site to place bin(s) cannot always be found. This will cause issues with traffic safety and sightlines. It is felt by private lane residents that this issue and any accidents arising from poor sightlines could affect their insurance; both auto and home. Who will assume liability for injuries incurred on Township property?

If the lanes are at township lane standards, I am sure they would be safe for slow traffic.

An onsite visit is a must for each and every private lane to determine the optimal location of the garbage bin(s). Stakeholders and/or lane association should be directly consulted.

Our Public Works Manager and our contractor have visited and consulted with people on almost all lanes.

**Reply from Councillor Del Stowe**

In response to the Greater Bobs and Crow Lakes Association letter dated September 27th and received by me on October 5th.

Taxation: All residents of South Frontenac pay 100 dollars (not based on assessment) for garbage pickup and for closing dumps. Bedford Residents were paying 20 dollars for dump closing and about 50 dollars for dump maintenance and for staffing. Therefore, Bedford residents are paying an additional 30 dollars for garbage and recycle pickup. Also, it should be noted that there is only 28000 dollars in reserves to close 4 dumps. Massasauga dump will have to be close in the next year and we would have been required to increase the dump closing fee substantially next year to meet our obligations. This will not be required now as South Frontenac will be closing the dump and the cost distributed Township wide. We are essentially getting garbage pickup and recycling pickup for slightly more under amalgamating than what it would have cost to close the dumps without garbage and recycling pickup. It should also be noted that we can take our garbage to any landfill or dump within the Township of South Frontenac. In regards to the bins, all residents have the same opportunity of buying a bin and having half the cost of the bin subsidized by the Township.



Maintenance: This is a common concern among Bedford residents. However, all the districts within South Frontenac have seasonal residents who have dealt with this situation by purchasing subsidized bins or taking the garbage directly to the dump on the way home. If garbage is left around the bin, the collector often cleans the mess and if the bags are not tagged may take them anyway. If this becomes a large problem, our by-law officer will come out and go through the garbage looking for a name and if found, a charge will be laid. I believe most people will abide by the rules and those that do not, will either be picked out by other residents or will be charged for littering.

Pollution: This issue has also been mentioned many times and since I was forced to keep my garbage in a bin in front of my house for long periods of time due to time constraints and fuel costs as I gathered my waste over a two to four week period before going to the dump. The purchase of a bin to store the garbage for a couple of days will resolve this problem. As mentioned above, all other district residents have generally dealt with this successfully.

Insurance: The Township will pick the site, prepare the site and place the bin if purchased. If you wish to build or purchase your bin elsewhere, the Township will come to your location and provide a recommendation on site location to ensure safety.

I am not a lawyer, but again, this is not something new to the Township of South Frontenac as all other districts have had this service for years.

In conclusion, we should be extremely happy that we were able to get council to agree to garbage pickup in Bedford considering the 100 dollar fee and the fact that our reserves were only 28000 dollars with the closing of Massassauga dump coming up in the next year.

Also, please remember that as dumps close, the distance to dumps increases and so does the cost in time and fuel to get there.



Fisheries Update – Fall/Winter 2010

By Gordon Thompson

One hundred and sixty tons of rock! That equals eight tandem truck loads of rock! That is what your team of dedicated volunteers placed in three creeks on our lakes this fall. Over 300 hours of volunteer time was used to place the rock in the creeks. Over 70 hours of donated heavy equipment was used to help move the rock. Bottom line! Thompson Creek, McEwen Creek and End Creek are now rehabilitated and ready for spawning walleye.

Thompson Creek is located off of Long Bay and was by far our greatest challenge. The Landowner Neil Lackey gave us permission to enter and do the work and then chipped in with his front end loader and chain saws to build a road through heavy bush into a set of rapids that used to host spawning walleye. He also moved all the rock from where the truck had to dump it to the edge of the creek where our team could

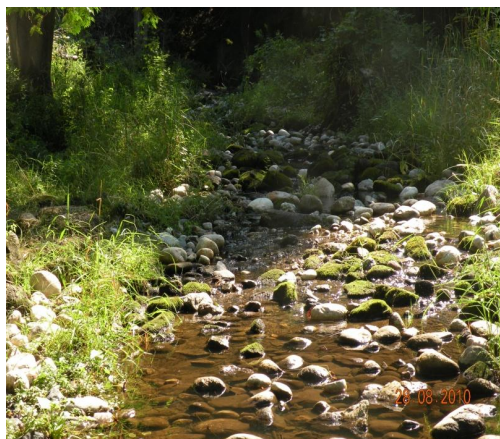
move it into the creek. Without Neil's help this part of Thompson Creek would never have been completed. We owe a debt of gratitude to Neil Lackey. It took two years to complete this project, which essentially corrects all the problems that resulted from the ice storm and resulting silting. Walleye should now be able to spawn at the mouth and the upstream rapids with ease.



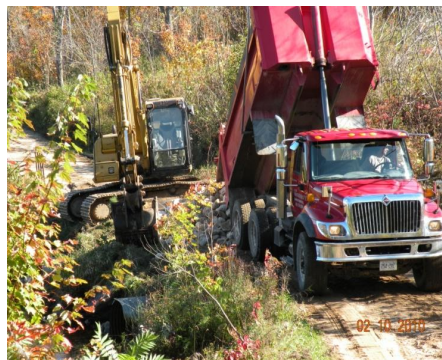


McEwen Creek is located on the west shore of Bobs Lake close to Bolingbroke. It is another creek that was great in the past but through bank erosion, debris and beavers had become unproductive as a walleye spawning area. Another two year project, this creek was cleaned of debris and rock laid from the mouth to about 100 yards up the creek. We have high hopes for this creek to provide good spawning numbers in the years to come.

Kudos here to our good friend and member of our group Glenn Russell who moved most of the rock from where the truck dumped it to various locations along the bank with his small but mighty loader. It was really a great thing because it allowed us to do many weekends of work in one. Glen is a great supporter and we really appreciate his efforts.



End Creek (we named it) is located at the very south end of Buck Bay on Bobs Lake. It's a great creek with a good flowing water supply and good potential upstream where there are many sets of rapids. The owners came to us on this one because they were aware of what we were doing. We did an initial assessment this spring and put it on the list of projects for 2011. The owner, Alan McNicol, wanted to proceed this year if possible and decided to donate the rock and Pete McNicol agreed to bring in a heavy lifter to help if we would do this creek this year. On an early October morning rock, machine and volunteers met and in 4 hours we moved 4 tandem loads or 80 tons of rock and finished rehabilitating the mouth of this creek. If we are to be successful in bringing the walleye fishery back to its full potential on our lakes it is stewardship initiatives like this of the McNicols which will go a long way to reaching our goal. We are grateful to our volunteers and the McNicols for giving us this added bonus of another creek this year.





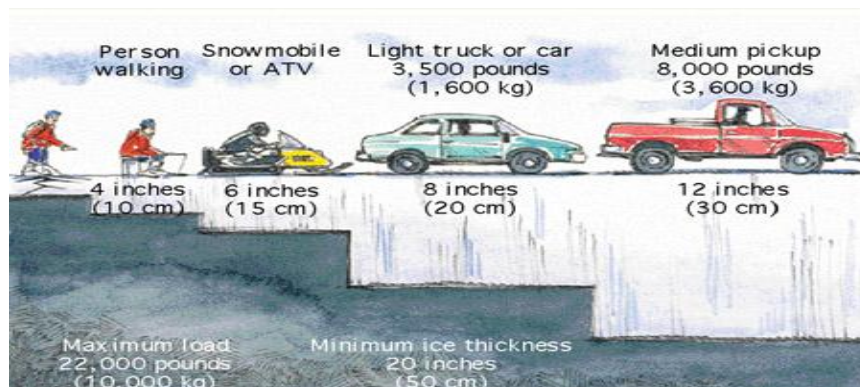
Next year the plan is to take on two large projects at the south end of the lakes. The first will be Campsel Creek on Green Bay. This creek has been altered as a result of a culvert replacing a dilapidated bridge. The culvert is placed too high to permit an acceptable egress for the walleye and therefore extensive remedial work on the road and in the creek will be needed to complete this project. Negotiations will take place over the winter with South Frontenac Township to see if we can work out an arrangement to permit the work to be done. We are confident this project will proceed next fall. The second project is the rehabilitation of Fish Creek at the south end of Bobs Lake. This has been a highly productive stream in the past but like all waterways debris and silting will, over time, reduce the streams capacity to support spawning. We were given to understand that the property owner was going to give us permission to do a one day assessment and then review and approve a plan with us for rehabilitation. We have just been informed by Paul Hickey that the family will not be giving permission at this time and therefore this project may not proceed. We will continue to try and get this project going. A second stage of End Creek may go ahead next year if we are unable to proceed with work on Fish Creek.



This completes a summary of where we are with the fisheries projects as such. We are pursuing a potential workshop on Cisco and Whitefish fishing techniques for the spring of 2011 to see if we can't interest folks in this underutilized and fun fishing challenge. We will also be organizing creel sampling teams and surveys to help determine the health of our fishery ahead of a full evaluation scheduled for 2013.

There are still great fall fishing opportunities so get out there and enjoy. I know my partner and I are getting our ice hut ready for another season. We are getting set to enjoy another adventure on our great lakes.

Attached is a chart to help you determine when it's safe to venture on the ice.





Fisheries Hall of Fame for 2010

By Gordon Thompson

This year we completed a great deal of work on 3 major fisheries projects all done with volunteers from our lake residents. Over 300 hours were given to these projects and many of the volunteers were there for every one of our workdays. This year we received help from many first timers in our group which increased the size of our resource pool. We need more, so if you are interested in joining our Creek Rehab Group send me an email at

gandkthompson@rogers.com or call me at 613 3557359. Once on the list you will be contacted with our plans and updates.

On behalf of the President and Board of Directors of the Greater Bobs and Crow Lakes Association we would like to take this opportunity to recognize our volunteers and thank them most profusely for their service during 2010. Without you I would venture to say that the future of Walleye in our lakes would be in jeopardy. You should be very proud of what you have accomplished and you are very special people.

Thank you.

DAVID AUSTIN	PETE MCNICOL
TURNER AUSTIN	STEVE MONIN
JIM BLAIR	RICK PRUDIL
BILL BRINK	BOB RIORDAN
RAY CASSIDY	BOB RIVRDON
BILL KEENAN	GLENN RUSSELL
KYLE DONALDSON	JOHN SEIDENSPINNER
ROSS DONALDSON	BETH SCHNURR
DON GOODFELLOW	BYRON TURNER
PHIL HAMMOND	MARTIN YATES
JOHN & LAURA HARVEY	BART YOUNG
REG HOUDE	BOB YOUNG
JUSTIN HOUDE	CLARENCE WATSON
NEAL LACKEY	





Water Quality Testing – Trend Data

By Jeff Carabott

Running May through September every year, a dedicated group of volunteers conduct water quality testing at various key locations of our lakes. Testing includes Secchi disk readings (for clarity) and total phosphorous (TP), the principle nutrient that makes lakes more fertile.

Thank you to all of the volunteer water quality testers.

We are presently awaiting Secchi disk test results from the summer of 2010, and I will report on these results in the spring newsletter.

RVCA Water Quality & E.Coli Testing

Each summer, the Rideau Valley Conservation Authority field technicians have collected water samples from watershed lakes under the **Watershed Watch** program.

Concentrations of total phosphorus (TP), total Kjeldahl nitrogen (TKN), and calcium (Ca) are analyzed from samples drawn at the deepest points of each area of the lakes.

The primary focus is on tracking the trophic state of the lakes, which is done by looking at the quantity (concentration) of nutrients (phosphorus, nitrogen and to a lesser extent calcium) available to support the growth of algae and aquatic plants. Summer 2010 data is not yet available, but based on 2009 and previous data from the past three years, only Mill Bay appears to have more erratic nutrient concentrations on a persistent basis, and could be considered to be closer to the eutrophic category (20 micrograms per litre or more – enriched, higher levels of nutrients).

E.Coli testing found no areas of concern on the lakes.

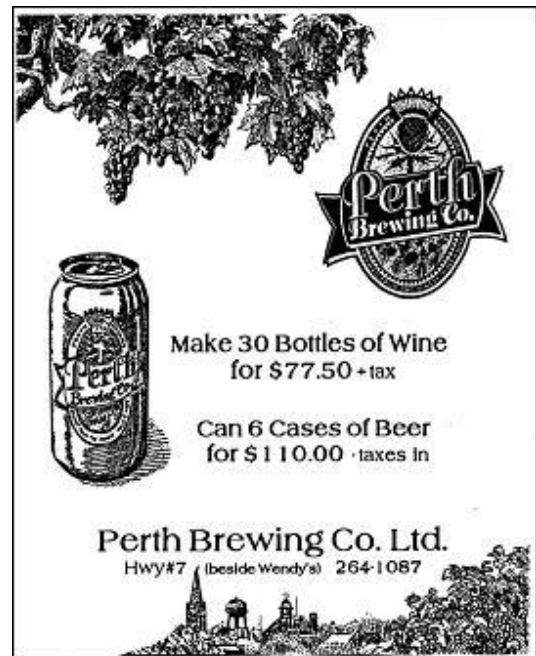
For more information, check the RVCA Watershed Watch website:

http://www.rvca.ca/programs/wwatch/watershed_watch.htm

Invasive Species Testing

The Ontario Federation of Anglers & Hunters (OFAH) conducted the invasive species sampling program (for zebra mussels and spiny water fleas) in Bobs and Crow Lakes this past summer. The results also have not yet been made available.

However, the 2009 results show **no evidence of zebra mussels or spiny water fleas in either Bobs or Crow Lake**. The concentrations of calcium in Bobs Lake show that the threat of zebra mussels may not be a significant problem, over time. Calcium is needed by the mussels to grow their shells, and the relatively low concentrations in Bobs Lake may not accommodate the development of large populations. All parts of the lake, except for Green Bay, are within the Poor Growth range on a scale from the OFAH. Calcium concentrations in Green Bay are slightly higher, and put it in the Moderate Growth range.



Perth Brewing Co. Ltd.

Make 30 Bottles of Wine
for \$77.50 + tax

Can 6 Cases of Beer
for \$110.00 + taxes in

Perth Brewing Co. Ltd.
Hwy #7 (beside Wendy's) 264-1087



Bobs and Crow Lakes Foundation

By Susan O'Brien Mactaggart



Earlier this month the Foundation sent out a major campaign mailing to many of the residents and supporters of our lakes. The new brochure was included in that mailing. We hope when you will read the letter and brochure you will understand the ongoing need for financial support for the programs for our lakes. We benefit endlessly from our time spent in this area and our cottages and homes are very important. Your donations are critical! Please keep the Foundation as one of your regular charitable donations. You will be the beneficiary in the long run as we work to preserve and enhance the quality of our lakes.

In the Spring look for exciting news!! The Foundation is planning two days of a Bedford Happening in August. It promises to be quite an event. Your next edition of "Lake views" will have all the details.

For those who may not have received the mailing and who would like to support the Foundation, please make cheques payable to "Bobs and Crow Lakes Foundation" and send them to the Foundation c/o Alexander Cameron, P.O. Box 482, Verona, K0H 2W0, Ontario.

You will receive a tax receipt for all donations of \$25.00 or more, applicable in both Canada and the United States.

The Foundation Directors greatly appreciate your support.



The Crow Lake School

By Kathy Martin, Director
Crow Lake Community Association

The Central Frontenac Heritage Festival began four years ago and the Crow Lake Community Association has played an active part by presenting the heritage of our area. On the Friday and Saturday of the Festival, the Crow Lake School House becomes a beehive of activities. On Friday the school is host to the grade 4 and 5 students from Hinchinbrook and Sharbot Lake schools. On Saturday we welcome families and friends to visit and enjoy all the presentations.

Outside are demonstrations of colonial life that illustrate the activities and materials important for survival in early times. Teepees, rifles, blankets, hatchets are on display and demonstrated by the "wilderness people" dressed in colonial garb. You will also see log hewing, bannock making, and taste some maple syrup candy made over the open fire. Inside the school, spinning and weaving, papermaking, soap making, seed saving and starting, and handmade quilts are some of the exhibits you can enjoy. Top off your visit with a wonderful homemade heritage lunch of leek soup, bread and apple pie.

The school house continues to be busy for the rest of the year. Every month on the last Monday there is a potluck supper at 6PM. People are asked to donate \$5.00 into the jar for the running of the school. This is a relaxed, enjoyable event that allows community members and friends to socialize. Everyone is welcome!

The school is also available to groups to rent for meetings, weddings etc.

Also, check the local paper for the schedule of workshops offered at the school. These workshops are given by various talented people and have included: cooking, twig furniture making, digital camera/photography, soap making, holiday crafting and herbal tea making. If there is an interest in a specific topic we will try to organize a workshop.

Crow Lake is a tiny hamlet on the map but packs a big punch with all that goes on there. Articles and books have been written about Crow Lake and the area. The "school" is the focal point and meeting place. Come see us and join us for one of our events.





Marine and Cottage Safety

By Heather Irving



www.boatingsafety.gc.ca

Yes, in answer to many questions, I did address the issue of unbelievable fast boating speeds and dangerous actions in the last issue. You just did not read it because of some sort of technology glitchsimply put...the editor did not get it. Given that winter is around the corner, perhaps I can save that for the Spring Issue.



MANY HANDS !!

MAKE LIGHT WORK !!

This is a PLEA for Help !

Often we refuse to admit it.....we need to ask for help.



As you are reading this, time is ticking by. If you are healthy, know someone who is, have a healthy relative, friend, grandchild, please loan yourself or them out to us. There are assorted tasks around the lake. A couple of hours of spare time can save all of us. Call me, email me, call anyone on the board....IF THEY SAY THEY do not need help....CALL ME BACK....cuz it isn't so!

THE BUOY STORY !!....Well now, this is an ongoing saga. Everyone, it seems, has a different view. Too big, too small, can't see, Say it ain't so. (Page 72. Boating guide)

The new ones are proving difficult to say the least for the buoy boys to handle and we have to make choices for different locations.....so how about some EXTRA HANDS ON DECK.

Help us save some lives, some boats/ accidents/propellers.



BOOZE, Boats, PWC's, Kayaks; canoes, paddleboats, sailboats, ATV's, snow machines, vehicles etc., etc..... simply do not mix.

At a recent O.P.P. meeting, a comment was made by another lake assoc. member that leniency should be given....and that it could affect tourism if a zero tolerance approach is taken....Me thinks not!!

I would prefer tourists visiting our areas and our lakes, to be reassured that we want them to be safe. We value lives.

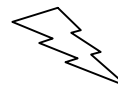
Thousands of lives have been destroyed as a result of alcohol related deaths & accidents on our roads and on our waters. The rules are there for a reason. If you break them and get nailed, serves you right.

THINGS TO RE-VISIT OVER WINTER:

I will get my boating card, no matter who says I don't need one.



I will buy a new Life Jacket even if my other one is only 5 to 25 yrs. Old



I will learn how to drive the boat, no matter who says I don't need to know.....



Cottage Safety (cont'd)



I will remember that this is worth "diddly" if it is in the boat & I am in the Water!

In the case of Life Jackets..."Size Matters" because they must fit you.....ADMIT IT, we hate to, but admit it, maybe there are a lot of us out there, that still think we are "Medium" but we have been "Extra Large" for years.....Oh just get the new one to fit properly !!



I will fasten a whistle to my "New Life Jacket" because I am supposed to!!



I will review items I need in my kayak/canoe.....cuz I can get a ticket too!!



I will learn how the cell phone works & actually take it with me....and know where I am too!



THIS IS ONE OF THE SINGLE MOST IMPORTANT ISSUES I HAVE COME ACROSS IN COTTAGE/MARINE SAFETY.

I am forced to address this issue. Having sat around many kitchen tables and heard the discussions, it frightens the living beejeepers out of me to know that there are so many folks out there in cottage country who **"DO NOT EVEN WEAR THEIR GLASSES"** when in the boat....OR they use their "old fishing glasses" that they have had for years.....love that line....or "I never bother to wear them in the car either".....yipes !!

AND then we complain that things aren't big enough can't be seen properly, or the colour isn't visible or ya gotta love this line..."oh dam, I hit that thing again".

....This is not just an age related issue. It is human nature.



Winter Bucket List

Will include getting your eyes tested. And I will tell the eye doc that I need to see the dash in the car, the dashboard in the boat, the ATV, the SUV, my computer, etc. etc.



KNOW WHERE YOU ARE

GPS Systems: I have been harping about these for years, having heard many stories about the fact that they are not totally reliable. After recently having a conversation with a person who insisted one of our islands had a road that went there, and trying to convince them with no luck that it did not, I thought how really dangerous this is. We hear the stories on the news.

Know where you are. USE the proper 911 emergency name for the property, not folklore names or that of previous owners.

The President of our association has just given me the Fire Book for emergency ramp and entrance launch sites for our lakes. I am aware that our Past President Charlie Stewart & some others have recently held meetings on these issues.

As requested, I will be adding notes to many locations, but only the ones that I am more familiar with. Since there are in excess of 50, the book will then be passed around to, shall I describe them as "other elders and long time lakers" in different areas for their comments and eventually be given back to the Fire Chief to update and make changes to their emergency books.

This is where we must all work together so if you have comments please email them.



Health and Wellness

By Heather Irving



RISE & RUN.....A project to plot and plan over winter....

Ladies & Gents....don't become a statistic. After a summer of seeing some of the worst stairs one could ever imagine in cottage country, I beg you to consider doing some repairs for your safety, that of your friends, neighbours, guests, relatives and your insurance company, especially if you rent your properties.

www.cmhc-schl.gc.ca rise & run for stairs.

What is an EpiPen

Many people have severe allergies to assorted insect stings, nuts, eggs, seafood or other foods or drugs.

Some carry an allergy kit. If you are one of those, make sure your friends and co-workers know about it and **HOW TO USE IT IN AN EMERGENCY AND WHERE IT IS KEPT.** IF YOU KNOW SOMEONE WHO SAYS THEY ARE ALLERGIC TO CERTAIN THINGS, LISTEN TO WHAT THEY SAY. Don't be shy. Ask them to show you how to use their EpiPen or if they have pills, what and where they are.....**NO JOKES PLAYED.**

.....Although this story sounds quite funny, fortunately I am still alive to talk about it. "Many years ago, I was taken on a trip over 40 miles back in the bush to a remote Quebec

hunting camp. Before supper was served, I said I was allergic to a certain food. Unknown to me, the joke was played. Several hours later, when I was eventually discovered as missing, the "not so sober search party" found me...laying face first out on the ground in 6 inches of fresh snow, having fallen off the outhouse seat and right through the door, which fortunately swung outward.... AND yes, drawers around my ankles, nearly frozen. The moral of the story, **No allergy jokes!!....**



The Scoop on Snow shoveling

By Catherine Ball, Registered Physiotherapist

Snow shoveling can place severe stress on the heart and cause stress and strain on your body from repeated twisting and improper lifting. However, if you shovel correctly you can still enjoy the cardiovascular benefits this great Canadian pastime can bring!

Snow shoveling has a similar intensity to jogging and racquet sports, so you will be better prepared if you avoid being sedentary the rest of the year and do regular physical activities such as walking.

As with other forms of exercise, you should warm-up before shoveling, take frequent rest breaks and separate larger jobs down into smaller stages to prevent over exertion. You should be aware of any cardiac distress including shortness of breath, chest and/or upper body pain, palpitations and other symptoms such as anxiety, sudden extreme fatigue, nausea, dizziness or lightheadedness.

Shoveling in extreme cold weather makes it harder to breath and adds extra strain to the body. Cold, tight muscles are also more likely to strain so make sure you warm-up first and wear warm clothing.

The Canadian Physiotherapy Association offers the following tips:



The Scoop on Snow Shoveling (cont'd)

Choose a shovel that's right for you:

- A bent handled shovel can reduce bending
- A plastic blade is lighter than a metal one
- A smaller blade reduces the temptation to pick-up a pile of snow that is too heavy

Use proper techniques:

- Grip the shovel with your hands 12" apart & keep one hand close to the base
- Squat with your legs hip width apart, knees bent and back straight
- Lift with your legs
- Scoop small amounts of snow and walk to where you want to dump it
- Step in the direction that you are throwing the snow

Take care of your body:

- Don't forget to take frequent breaks and stand up straight and walk around periodically to bring your spine back to neutral. You can extend you spine by placing your hands in the small of your back and bending backwards slightly. Repeat this 5-10 times.

If you experience pain or sustain an injury, consult a physiotherapist. Physiotherapists are primary health care providers who help people of all ages and lifestyles gain and maintain their physical mobility.

Catherine Ball is a Registered Physiotherapist and Owner of Perth Physiotherapy, Sports Injury & Rehabilitation Center

www.perthphysiotherapy.ca



From a Pharmacist

By Marg Hetherington, R.Ph.

Catch Your Breath

Did you know that Canadians spend up to 90% of their time indoors? This is a fact from The Lung Association website www.lung.ca.

As we move from the outdoors at our cottages to the indoors to get ready for the coming Holiday Season it is time to catch our breath. But, for a lot of Canadians, it is truly difficult to do that. Many of us suffer from asthma and COPD (chronic obstructive pulmonary disease) and poor quality air indoors can make us sick. There are specifically two sources of pollutants: biological and chemical. Biological can include moulds and dander from our pets. Chemical will include cleaning supplies, personal care items such as soaps and lotions, second hand smoke and scents. Did you know that second hand smoke contains over 4000 chemicals many of which are toxic and can cause cancer – things like cadmium, carbon monoxide, and cyanide? The dangers of smoking have now been well established but the risks of second hand smoke include lung disease (25% increase) and heart disease (10% increase). And remember that smoke will cling to your clothing and other items that can then be passed on to others.

Scents include anything that adds a smell. Someone with asthma or COPD can develop headaches, dizziness, feeling tired or weak, shortness of breath, nausea, cold-like symptoms and worsening asthma just from fragrances.

Please respect "scent-free" policies at places of work, schools, hospitals, etc. If you choose to wear a fragrance – choose a lighter fragrance – no one more than an arm's length away should be able to smell it. This is a personal plea. My Dad died from COPD and I remember the suffering he endured, struggling to get a breath. I also have several friends and clients with asthma who struggle to breathe when exposed to strong scents and second-hand smoke.

Flu, cough and cold season is once again upon us. The Public Health Departments are running their annual "Flu Shot" Clinics. Be sure to make sure that you and your family are protected by getting a flu shot this year. Coughs and colds can't be stopped as effectively but the most important step that has been stressed is the value of correct hand-washing. Regular old soap and water is our best friend to reduce exposure to viruses and bacteria. If you find that you are still developing a cold – be sure to talk with your pharmacist who will choose products that are safe for you and your other medications.





Cook's Corner

By Heather Irving

EGG SUBSTITUTES FOR BAKING & COOKING

1 egg = 2 heaped tbsp potato starch or arrowroot powder

1 egg = 1 small banana or ½ big one

1 egg = 2 tbsp cornstarch + 2 tbsp water

1 egg = ¼ cup silken tofu

1 egg = ¼ cup applesauce

LOTS MORE: Visit www.emaxhealth.com

HOW TO SUBSTITUTE EGGS IN A BROWNIE RECIPE

1. CAREFULLY read instructions in recipe or on box. How many eggs do you need?
2. To use yogurt instead of eggs: 1 Tbsp. of yogurt for each egg
3. To use half and half or light cream in place of eggs: use 3 Tbsp for each egg. (makes more dense & chewy brownies)

The perfect setting for building memories.

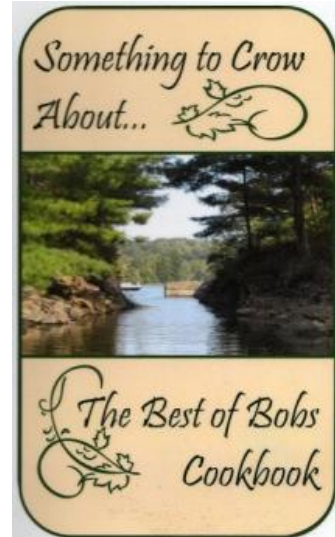
The Lake District, an area of geological wonder.

Lake District Realty, the company bringing you to tranquility...

LDR

Lake District Realty
CORPORATION. BROKERAGE
THE WATERFRONT COMPANY™
WATERFRONT SALES, DEVELOPMENT & RECREATION PROPERTY SPECIALISTS

www.LakeDistrictRealty.com | Starbuck Lake | 613-279-2108 Toll Free - 877-279-2116



\$15.00 per copy to order, contact
gbcla@ca.inter.net or
mandalps@yahoo.ca

SPICED PUMPKIN MUFFINS

- 2 cups all purpose flour
- 2/3 cup packed brown sugar
- 1/3 cup granulated sugar
- 1 tbsp. baking powder
- 1 tsp. salt (if desired)
- 1 tsp. ground cinnamon
- ¼ tsp. Baking soda
- ¼ tsp. Ground ginger
- ¼ cup melted butter
- ½ cup 100% pure pumpkin
- 2 large eggs, lightly beaten
- 1/3 cup buttermilk (a must)



Turf everything together. You know the story. Add other things like bits of peeled apple, raisins etc. Stir just until moistened. 400 degrees 15 to 20 min.

...personally....I never cook muffins at more than 375 to avoid the "hockey puck" bottoms and it just seems to work better.





The Lloyd Jones Corner of Lake Views

The Bagworm Moth

By Lloyd Jones

We have a new insect around the lakes which belongs to the Bagworm Moth family. During the summer of 2008, I noticed a few strange, tiny bundles of wood fragments glued to the side of the cottage. The tiny sticks in the bundle were only a few mm. long. The distinctive bundle identified the insect as a member of the Bagworm Moth clan, of which there are about sixty species. The bundle, or sack, was a pupa for the insects' eggs, and the home of the female, which usually stayed in it after hatching, but quickly died because she did not have a developed mouth to allow her to feed. I was not able to identify a related larva or moth.

In 2009, the sacks were more numerous, but the supporting cast was still not evident. All that changed this past summer. Many more sacks appeared, as well a large number of caterpillars. They were furry white, about an inch in length, with black heads and a row of regularly-spaced black spots down their backs. Sometimes they hung from a tree on a long silk thread, which allowed them to blow about in wind. Often they were quietly resting on the cottage exterior walls, or in more sheltered places. Many caterpillars were still appearing at the end of September.

The caterpillar uses its silk threads to produce the sack which they carry around with them. They select bits of wood to cover the sack's surface. Then they glue the bundle securely to some object. The eggs are left in the sack, even to survive winter. Over the summer months, there appears to have been several generations produced. The probable moth is small, triangular, and dull grey-brown in colour. The moth was active during the day and at night when it appeared at windows. The species of this new arrival remains unidentified.

This moth appears to be capable of quickly increasing its population, but whether its arrival is significant in any way remains to be seen. Apparently a few species damage some trees. Perhaps the warming trend has encourage the

moth to move to our region along with other migrating creatures - perhaps some with an appetite for white caterpillars.



St. Andrew – The Little Church of the Fisherman

By Susan O'Brien Mactaggart

As promised, here is part of the history of the church on Bobs Lake.

Laura Lee Davidson was a long time summer resident on our lakes from the United States. Laura, or Lal as she was known to her close friends, had a special love for this area. Through her efforts and with the backing and enthusiasm of many of the local families, the little church of St. Andrew was built on the western shore overlooking the northern part Bobs Lake.

In 1930, land on a beautiful bluff that reached down to the lake had been donated. A pledge sheet for labour to build the church was passed through the community and 20 men and boys had promised two days a piece. The next hurdle was to raise money for the building materials. They never asked for more than \$1.00 and people donated from far and wide. Some gave \$5.00 and others the amazing sum of \$25.00.

People of all faiths donated to the cause. Gifts were also received. "From a member of the Episcopal Church in Chicago came money and a pair of beautiful Sheffield candlesticks; from Maryland, a chalice and paten. The communion linen was a gift of friends of the Christian Science belief and one large gift of money came from some of the Jewish faith."

During the summer of 1930, the sod was turned and the foundation for the church was dug. Word of the project had already reached the Bishop of Ontario and after a surprise visit from the Rector at Parham on his behalf, a Theological



The Lloyd Jones Corner of Lake Views (cont'd)

Seminary student from Toronto was assigned to hold services on the site and build a congregation. By the following spring the sum of \$390 had been collected and on July 13, 1931 the work began. The building frame took shape and the first rector was assigned to the church. Although he already had three missions he enthusiastically added St. Andrews to his charge. As Lal Davidson said: "He has among his other claim to distinction, that of being the only person I have ever met who was able to erect enough of a church to be dedicated on less than \$400."

The Bishop of Ontario sent word that he would visit that August 27th to dedicate the church. Panic set in as it was already August 19th and nothing was really ready for this important day. However, the community rallied again and through the amazing work of everyone the church interior was finished and decorated. The dedication ceremony was indeed a highlight, attended by all the community, clergy from neighbouring parishes of all faiths and of course, the Bishop in full formal vestments. And so, *St. Andrew, The Little Church of the Fisherman* was dedicated "for the worship of God, according to the rites and discipline of the Church of England in Canada."

What many may not know is that Miss. Davidson was the grand niece of the Civil War General Robert E. Lee. She donated two chairs to the church that had belonged to him.

All quotations from the book, *We Build* by Laura Lee Davidson, 1937 Linden Press, Baltimore, Maryland.

Dry Stone Wall Masonry

By Susan O'Brien Mactaggart

For those of you who might be interested there is a person in our area who does dry stone walling and his work is excellent.

His name is Sean Donnelly and he is certified under the Dry Stone Walling Association of Great Britain. You can learn more about Sean at www.throughstonemasonry.ca or contact me for a reference.

GBCLA Advertising in Magazine

By Susan O'Brien Mactaggart

As of the New Year 2011 the directors have approved the following policy.

"We have always welcomed advertising in the two magazine issues we publish each year. In order to simplify and make it a fair playing ground for everyone it has been decided to change what size ads we will accept and the costs. Listed below are the advertising guidelines.

1. Only business card size ads will be accepted.
2. The cost is \$75.00 per annum which will provide you ads in both the spring and fall magazines.
3. Effective date for this policy will be for the year 2011.
4. We will not accept any advertising on our web site.

It is our purpose to accept advertising that pertains to the health and maintenance of our lakes and/or ads that may be of interest to our members. The Greater Bobs & Crow Lakes Association reserves the right to accept or deny any request of an advertisement to be placed in our magazine."

Please forward your request and copy by email to obmact@rideau.net

Please forward your cheque payable to the Bobs & Crow Lakes Association

To: Martin Yates, Treasurer GBCLA

373 Crow Lake Rd. R.R. # 3 Maberly, K0H 2B0



Heather Irving

Sales Representative

"A Bobs Lake Resident"

Sutton group-masters realty inc.

Brokerage

Independently Owned & Operated

26 years experience

Direct: 613-375-6550

1-800-808-4448

Office: 613-384-5500

Kingston – Bobs Lake – Land O'Lakes



Neighbour to Neighbour



Adventures of a Laker – “Count Your Nuts and Bolts”

By: Heather Irving

You all know by now that I am assigned the task of “humour”. So you know where this is going. It is July. I have just bought a new BBQ in Perth. I get home, follow the instructions. That starts me off on the wrong foot already.

I get out all the parts, count them all & match them up. I am short some nuts and bolts but have parts that fit nowhere. I cuss.

Back I go along that bumpy Althorpe Road with the BBQ in tow. Get to the Hardware store in Perth. Explain. They say bring it in, then no, leave it in the car, then they call this really, really good looking tall man to deal with me.

?? Have you ever had one of those conversations that no matter what lines you used, they all came out wrong....Well this was the day. I advise him he is missing some nuts. He grins and tries to answer but says he doesn't think so. It then goes to “your nuts don't fit”, ... picture it...he replies and no matter what he says, it comes out wrong. He keeps calling me “Madam” at first and I tell him I am not a Madam and it makes it sound like I am in charge of a Brothel....by the blank look on his face, I realize he does not know that term, so I then use a couple of other descriptive adjectives....he then calls me “Mam”...

Eventually off I go, with no more nuts and bolts, one pin that is for another hole on another thing but I don't need it. At home, the BBQ gets put together and my cuss words are now used up for the entire month of July and part of August.

Of course, there were Turkeys to dodge on that Althorpe Road as well which then made my loose package of nuts and bolts all fall out

everywhere!!!

Onward through summer and motorcycle adventures, the near miss of a Moose on the Crow Lake Road, two close encounters on the bike with Bambi (big Bambi) more turkeys, grouse, a porcupine and three racoons.

My first Motorcycle trip was to Perth Physiotherapy where I was given instructions on how to sit properly because of my back....Just as well she ain't following me along!

I am shocked at the number of bad car drivers. Yes, bad drivers exist in all categories but I just can't believe what has happened to me. Twice cars have tried to pass me on the railway tracks...On the railway tracks!! Did they think the cottage was going to move before they got there?

They have passed on curves, hills, solid lines, through intersections, refused to stop for school buses, trains, stop signs, lights etc. It has truly been a summer of bad cussin on my part. Yup, it is now time to get the local free range Chickens & Turkeys again.

Here we go again back across that Althorpe Road. Yes, I feel sorry for them again, so I name them. The turkeys are Bill & Norm. Bill got cooked at Thanksgiving....toughest old bird.

Could have played basketball with him. Must have gotten overlooked in the barnyard for a few seasons.

THE END.....SHOP LOCALLY !!



Kid's Corner

Contest Winners

By Heather Irving



Congratulations to:

Lauren Walker -- Age 6

Rachael Walker -- Age 11

These two young ladies spend lots of time visiting with their grandparents at their Bobs Lake Cottage in the Main West Basin.

Lauren's very short story is a classic:

"When I visit Bob's Lake, I like to feed the Chipmunks. My Grandpa puts a peanut in his shirt pocket and the Chipmunk will go in his pocket to get it out. It is really funny.

Rachael's comments were: I want to give my answers for the contest for age 11-16. I am only 10, but I turn 11 this summer.

The girls were given a choice of I-pod cards or Canadian Tire Cards. They both chose gift cards for Canadian Tire, because they like to fish on our lake so much and want to be able to buy some new fishing equipment. The cards were supplied to them courtesy of Marine & Cottage Safety at no cost to our Association.

Happy Fishing



Photos by: Heather Irving



Treasurer's Report – 2009-2010

By Martin Yates

For the second year we were able to fund our major projects through funding from the Bobs and Crow Lakes Foundation. Their grant of \$3577.21 – 28% of our total revenue - paid for the Marker Buoy project which enabled us to build the 40 new buoys that mark rocks and shoals around the lakes.

Also, through the initiative of our Fisheries Director Gordon Thompson, the 2009 - 2010 Fisheries Rehabilitation Project was funded entirely by a grant from The Ontario Ministry of Natural Resources, and so does not appear in these accounts.

Membership fees, our largest source of revenue, remained stable at \$7140.00, while general donations – thank you! - were \$1036.30. Total revenues were lower than last year, as we are no longer holding the boating courses, and sales of the cookbooks and maps have slowed somewhat.

On the expense side, we have been successful in reducing the costs of our biggest expense, The Lake Views Magazine, by emailing copies to those of you who volunteered to accept an electronic rather than a paper copy. This saves on both postage and copying expenses. The magazine costs came in at \$1640.83 – a saving of \$1000 over last year. Once again, thank you! We were also able to make a small saving on the Annual Members Meeting.

Our surplus for the year was \$2,313, and at year end, June 30th 2010, our net assets stood at \$28,171.

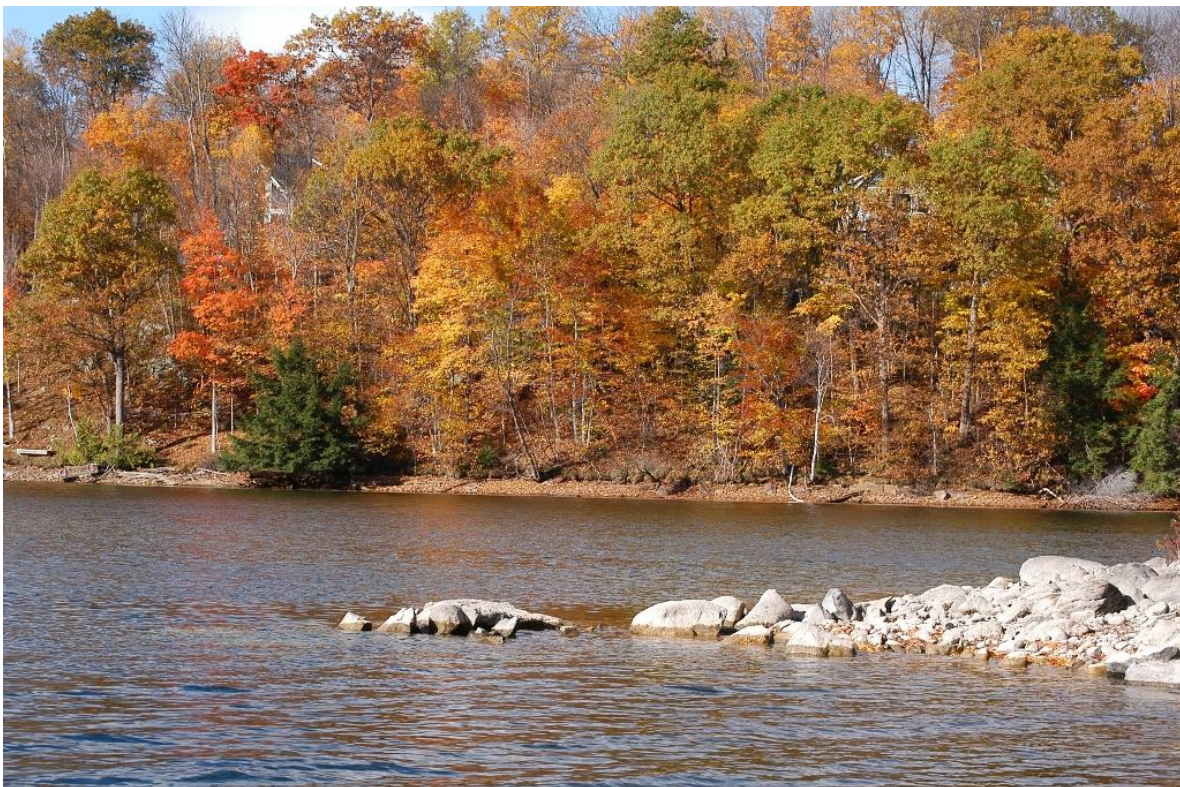


Photo by: Norm Mole

**Income Statement for the year ended 30th June 2010**

	12 mos 30/6/10	12 mos 30/6/09
REVENUE		
Memberships	\$7,410	\$7,300
Donations	966	1057
From Bobs and Crow Lakes Foundation	3577	3847
Book and Map Sales	585	1425
Interest & Miscellaneous	77	670
Boating Courses	0	910
	\$12,615	\$15,209
EXPENSES		
Project – Boat Cards	\$0	\$3,847
Project – Marker Buoys	3642	0
Annual Meeting	865	1048
Boating Courses	0	758
Boating Safety / Security	0	63
Cookbook	293	694
Insurance	1399	1372
Memberships / Subscriptions / Donations	740	780
Miscellaneous	449	160
Lake Views Magazine	1641	2645
Office expenses & Supplies	461	437
Website	119	181
Professional Fees	550	525
Road Signs	143	218
	\$10,302	\$12,728
NET INCOME (LOSS) FOR THE YEAR	\$2,313	\$2,481
NET ASSETS – BEGINNING OF YEAR	\$25,858	\$23,377
NET ASSETS – END OF YEAR	\$28,171	\$25,858



**Greater Bobs and Crow Lakes Association
Membership Application / Renewal Form**

Date: _____

Name: _____

eMail: _____

Mailing Address:

Summer Address (911 number):

Winter telephone: _____

Summer telephone: _____

Township (Please circle appropriate) *Central Frontenac, South Frontenac or Tay Valley*

Cottage Location (select appropriate location):

☐ Big Bobs (Main/West Basin)

☐ Crow Bay

☐ Central Narrows

☐ Long Bay

☐ Green Bay

☐ Buck Bay

☐ Mud Bay

☐ Norris Bay

☐ Bobs Lake East Basin

☐ Crow Lake

☐ Mill Bay

Annual membership dues are **\$30.00**.

If you wish to donate additional funds please indicate amount \$_____. If this donation is to be used for a specific purpose let us know. _____

Please make cheques payable to Greater Bobs and Crow Lakes Association. Membership form and cheques may be given to any Lake Association Board member, or mailed to:

Greater Bobs & Crow Lakes Association
c/o Edie MacNinch
26 Rutherford Cres.
Kanata, ON K2K 1N2

Membership enquiries: emacninch@sympatico.ca

For further information or to volunteer please visit our website at www.bobsandcrowlakes.ca